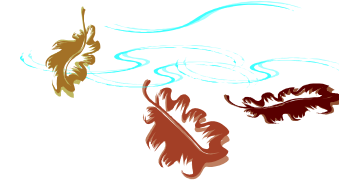





Society of Women Engineers

ASPIRE • ADVANCE • ACHIEVE

**Society of Women Engineers –
Eastern Washington Section**
P.O. Box 364 Richland, WA 99352
www.swe.org
Region J001
<http://www.eastwashingtonswe.org/>
easternwashingtonswe@gmail.com



Upcoming Events

- Tuesday, Sep 14 Annual “The Way We Are” Meeting
Tony Roma’s Restaurant 6 PM
- Tuesday, Oct 6 Board Meeting 6PM
Dimple’s House
- Friday, Oct 29 Halloween Party 6 PM 
Dimple’s House
- Wednesday, Nov 10 Board Mtg/General Business Meeting

Important Dates

- Sep 18-19 ABJ Conference, Reno, NV
- Nov 4-6 National SWE Conference, Orlando, FL

Inside this Issue:

Upcoming Events.....	1
Important Dates	1
Opening Note.....	2
The Way We Are – Annual Meeting	2
WE10 National SWE Conference.....	3
EWS Halloween Party.....	3
2010 Regions ABJ Annual Meeting.....	4

~~~~~

The Society of Women Engineers (SWE) is a not-for-profit educational and service organization that empowers women to succeed and advance in the field of engineering, and to be recognized for their life-changing contributions as engineers and leaders. Founded in 1950, SWE is the driving force that establishes engineering as a highly desirable career for women through an exciting array of training and development programs, networking opportunities, scholarships, outreach and advocacy activities, and much more.

~~~~~

Aspire • Advance • Achieve at Every Stage of Your Career

Opening Note

SWE Members and Supporters,

SWE-EWS has some great events coming up this fall that I hope you can attend.

First, we have The Way We Are on September 14th. This is an excellent opportunity to network with local SWE members and learn about the amazing work local women are doing.

Next will be the Halloween Party, a social event where friends and family are always welcome. Come enjoy pumpkin carving, a movie, and of course the potluck!

November 10th will be the Fall Business Meeting, open to all current and potential SWE members. We will discuss SWE-EWS news and business, as well as get a recap of the SWE National Conference. If you are interested in getting more involved with SWE-EWS, this is your chance!

I look forward to seeing you at these events, and as always, please let me know if you have any questions!

Dimple Patel
SWE-EWS President
dimple.h.patel@gmail.com



The Way We Are – Annual Meeting

Our first meeting of the year is “The Way We Are”, an annual event that brings women engineers together to discuss the career and accomplishments of local SWE members.

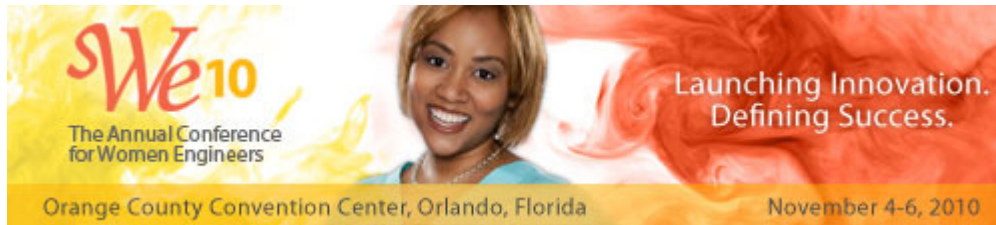
The event is coming up September 14 @ 6pm at Tony Roma’s in Kennewick. ([8551Gage Blvd Kennewick, WA](http://8551GageBlvdKennewickWA)). It is a great way to get to know your fellow SWE members and get ideas about what you can do with your engineering career!

This is a social dinner for new and old members, spouses, friends, and is a good time to invite potential new members to see what our group is all about. If you are interested in attending, please RSVP to easternwashingtonswe@gmail.com.

As traditional, EWS SWE members will be speaking about their careers. This year's speakers will be:

Jennifer Williamson - SWE-EWS FY11 Vice President
Colleen Smalley - SWE-EWS FY11 Treasurer
Sarah Widder - SWE-EWS FY11 Secretary

WE10 National SWE Conference



Launching Innovation. Defining Success

this year's upcoming Annual Conference in Orlando, Florida..

When: Nov 4 – 6

Where: Orlando FL

Where do the top women engineers and engineering students, educators and entrepreneurs gather to advance their careers, sharpen their technical training and share their expertise? SWE events, of course! Mark your calendar today to join us for our flagship Annual Conference, the excitement of eWeek, and regional SWE section events-plus key industry conferences and partner events.

WE10 is the largest and most comprehensive gathering of forward-thinking women engineers and technologists. Adding to the already high energy of WE10, the culmination of our yearlong SWE60 Anniversary Celebration will provide inspiration and spike enthusiasm. Throughout the conference participants will experience numerous career-shaping opportunities, as well as draw from the energy of SWE's strong past and promising future to launch innovation and define success.

To register or find out more information, go to <http://we10.swe.org/>

Then let your friends know you're attending on Facebook!
<http://www.facebook.com/event.php?eid=139451102745767>



EWS Halloween Party

When: Friday October 29th 6 PM

Where: Dimple's House

Come celebrate Halloween with SWE! The event will feature pumpkin carving, "It's the Great Pumpkin Charlie Brown", and a SWE Iron Chef - secret ingredient.....PUMPKIN! The event will be a potluck, so if you don't want to bring a pumpkin inspired dish to compete in the Iron Chef challenge, bring something else to share. As always, friends and family are welcome and encouraged!

RSVP to easternwashingtonswe@gmail.com for location and directions....



2010 Regions ABJ Annual Meeting

When September 17-19, 2010

Where Silver Legacy Resort Casino in Downtown Reno, NV
Hosted by Region A and the Sierra Nevada Section

Friday, 4pm - 9pm Hospitality Suite, Networking, &
 Sweets/Drinks

Agenda

Saturday, 7am - 5pm ABJ Meeting (w/ breakfast and
 lunch)

Sunday, 7am - 12pm Region Meetings (w/ breakfast)

The traditional purpose of the ABJ meeting is to prepare and discuss issues relevant to the upcoming National Conference, brainstorm mega issues, to discuss the ongoing work of the Society, and to network with the other west coast SWE members. Plus, the FY2011 Society President will be in attendance!

Online Registrations:

http://swe-goldenwest.org/Region/RegionMtg2010_ABJ_register.html

Thanks to everyone who submitted information for this newsletter! Send input for the next Issue to Ann Langevin by October 30 at Langevin5@frontier.com

CONTACTS		
Position	Name	E-mail
President	Dimple Patel	Dimple.h.patel@gmail.com
Vice President/ Programs	Jennifer Williamson	Jennifer.Williamson@pnl.gov
Secretary	Sarah Widder	Sarahwidder@gmail.com
Treasurer/ Finance Chair	Colleen Smalley	smalley.colleen@gmail.com
Section Rep. Nominating Chair	Alicia Boyd	alicialane@gocougs.wsu.edu
K-12 Career Guidance Chair	Karen Larsen	kmb Larsen@charter.net
Publicity Chair Awards Chair	Renee Slocumb	rcslocum@bechtel.com
Membership Chair	Open	
Continuing Development Chair	Open	
Newsletter Editor	Ann Langevin	Langevin5@frontier.com
TCTC Chair	Joan Young	Joan.young@pnl.gov
Scholarship Chair Job Postings	Sandy Brower	embrower@aol.com
Certificate of Merit Chair	Jennifer Williamson	Jennifer.Williamson@pnl.gov
Historian	Wanda Munn	wimunn@aol.com
SWE-EWS Webmaster	Dimple Patel	Dimple.h.patel@gmail.com
Region J Governor	Wendy Obenauf	Wendy.l.obenauf@intel.com

If you know someone who might be interested in joining please forward this Newsletter via email or via land mail. Just print, fold, staple, stamp and mail.

ADDRESS CORRECTION REQUESTED

Society of Women Engineers
Eastern Washington Section
P.O. Box 364
Richland, WA 99352

SWE Member or friend